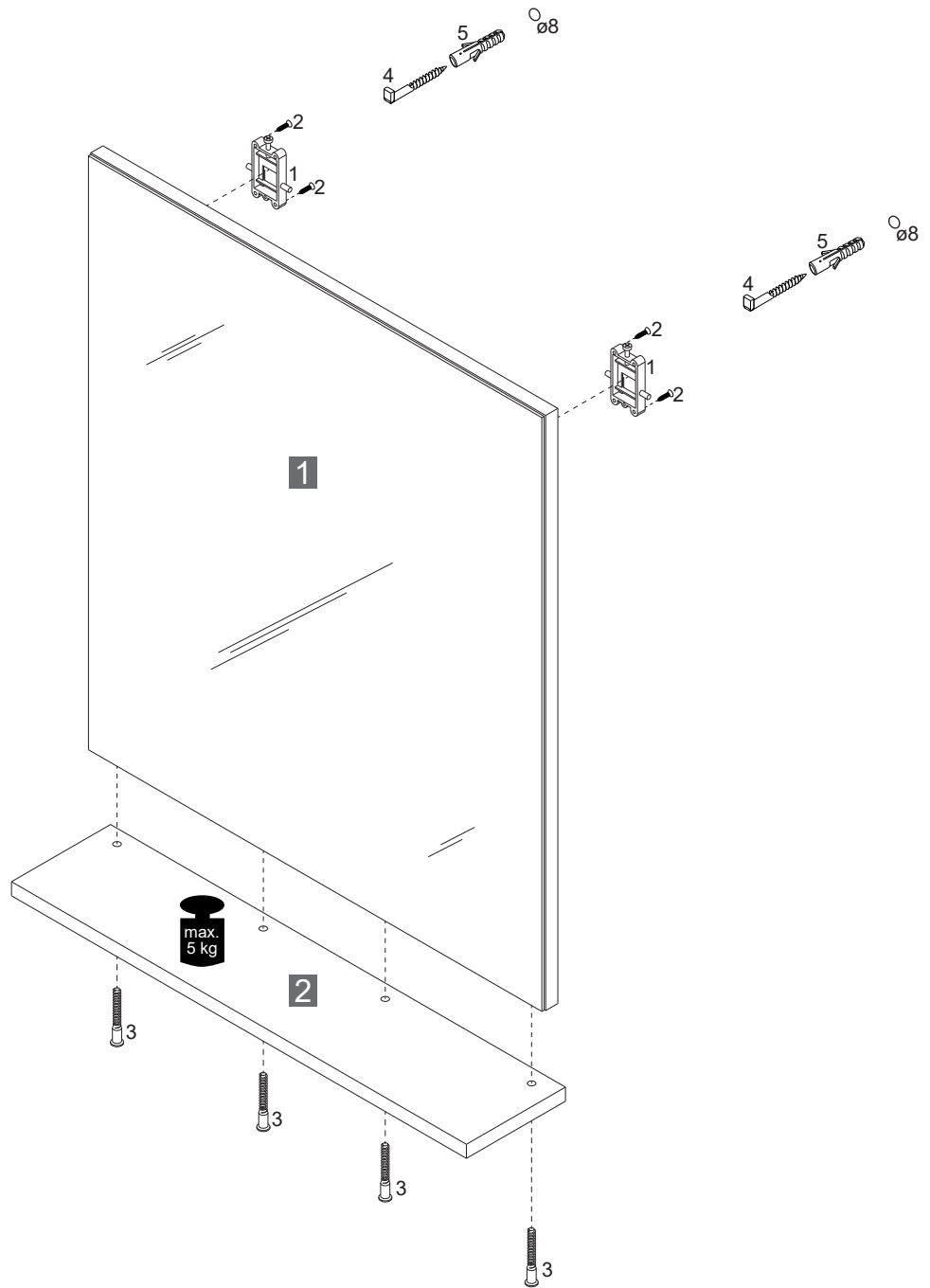
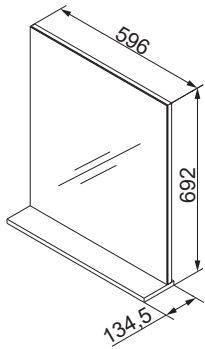


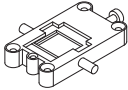


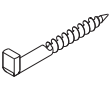
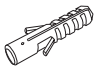
84639



1 2XRWM84639 AstEi

2 2XAL846392 AstEi

Alle Maßangaben sind ca.-Maße und können geringfügig abweichen.
All measurements are approximate and may vary slightly.

1	2	3	4	5
				
4BB0139000	3,5x25mm 4SK3.5X250	6,3x50mm 4SK6.3X500	4HS5.8X650	Ø8 4BD8000000
2 x	4 x	4 x	2 x	2 x

FACKELMANN® GmbH + Co. KG
 Sebastian-Fackelmann-Str. 6
 91217 Hersbruck • Deutschland
 FAX: 09151/811-294
 Servicetelefon: 09151/811-206
 servicebm@fackelmann.de
 www.fackelmann.com

Montagehinweise

Reihenfolge der Montage:

- 1 Beckenunterschrank
- 2 Spiegelement, Spiegelschrank
- 3 Hängeschrank, Midischrank

DIE MONTAGE IST DURCH FACHKUNDIGE PERSONEN DURCHZUFÜHREN.

Vor Gefahr bei fehlerhafter Montage wird gewarnt. Bei Schäden an Möbeln oder Personen, die durch fehlerhafte Montage oder durch die Montage durch nichtfachkundige Personen entstehen, erlischt jegliche Gewährleistungspflicht.

Versichern Sie sich, dass sich im Montagebereich weder Wasser- noch Elektroleitungen befinden und dass die mitgelieferten Befestigungsmaterialien für das Mauerwerk geeignet sind. Leichtbauwände o.ä. erfordern Spezialdübel, ansonsten ist die Lastaufnahme nicht ausreichend.

Achtung:

Der Anschluss des Strom-Zuleitungskabels muss unter Berücksichtigung von VDE 0100-701 durch einen Fachmann erfolgen.

Änderungen aufgrund technischer Weiterentwicklung bleiben uns vorbehalten.

Instructions for Installation

Order of installation:

- 1 Basin cabinet
- 2 Mirror board, Mirror cabinet
- 3 Wall cabinet, Midi cabinet

THE INSTALLATION HAS TO BE CARRIED OUT ONLY BY EXPERTS / SKILLED PERSONNEL.

The user is warned against the dangers of inaccurate installation. The warranty deed expires for any damages to furniture or people that have been caused by inaccurate installation or the installation by unskilled /unqualified personnel.

Please ensure that there are neither water nor electrical pipes within the area of installation and that the fixing and mounting material provided together with the furniture is suitable for the masonry. Gypsum plasterboard walls require special dowels; otherwise the load carrying capacity is not sufficient.

Attention:

The connection of the electrical power supply cable needs to be made by a technical expert under consideration of IEC 60364-7-701.

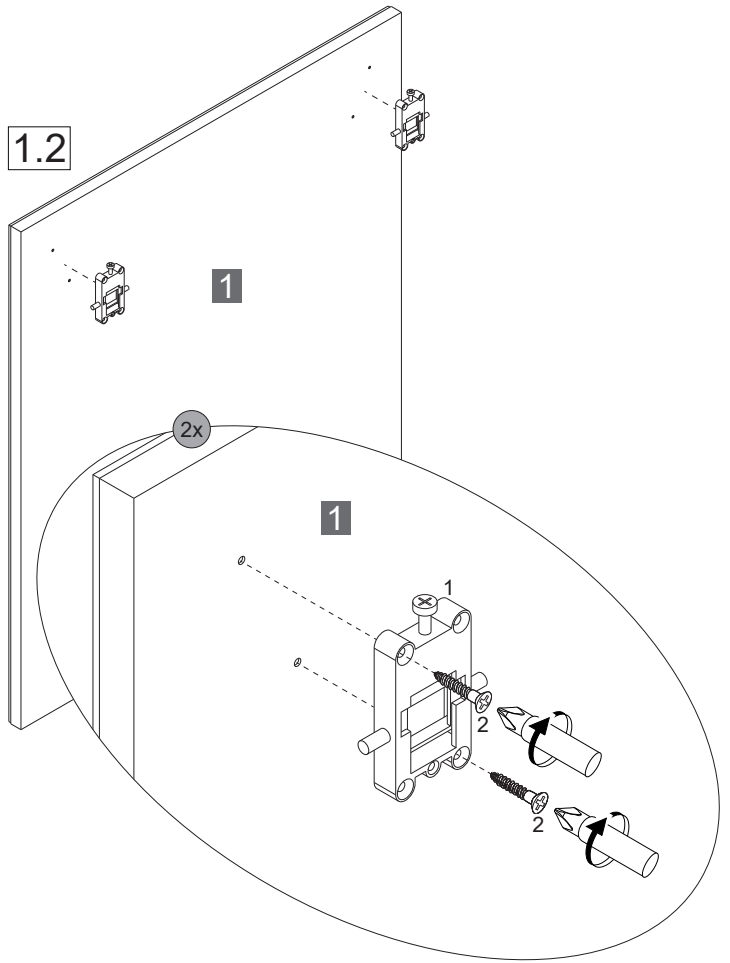
We reserve the right to modifications due to technical development.

2 1

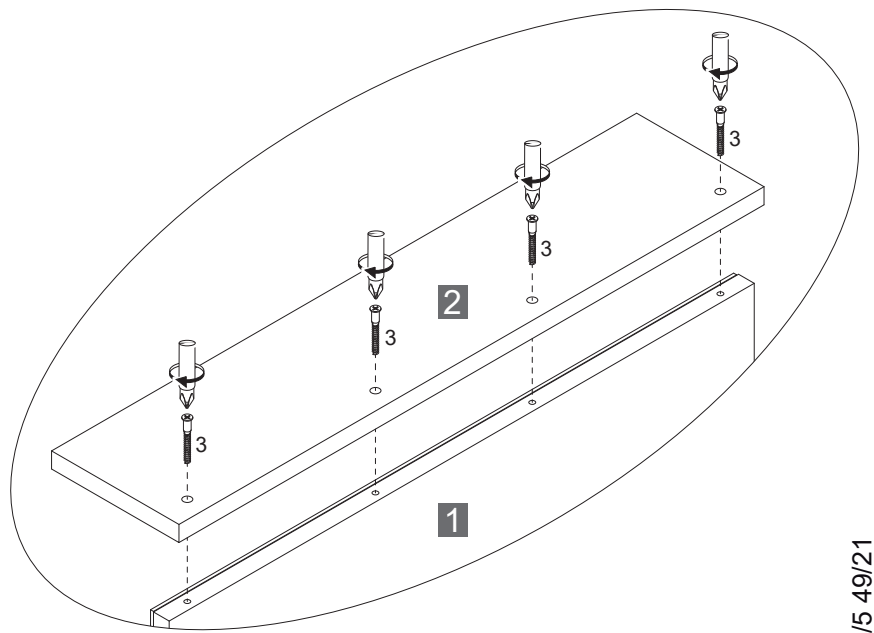
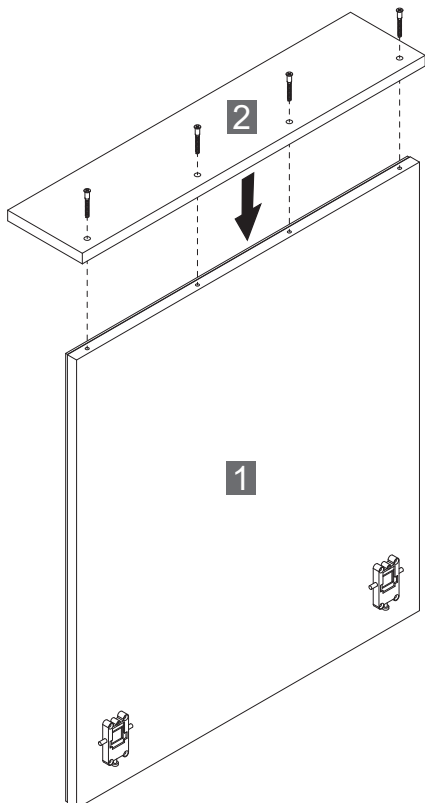
1.1

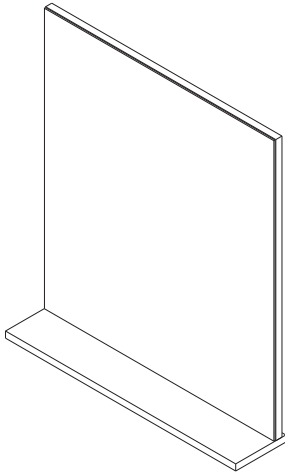
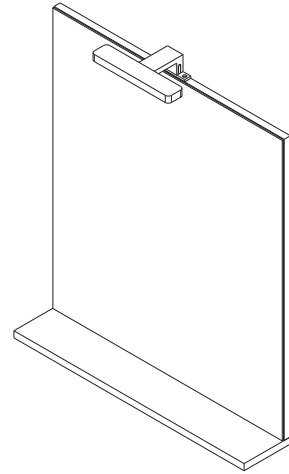
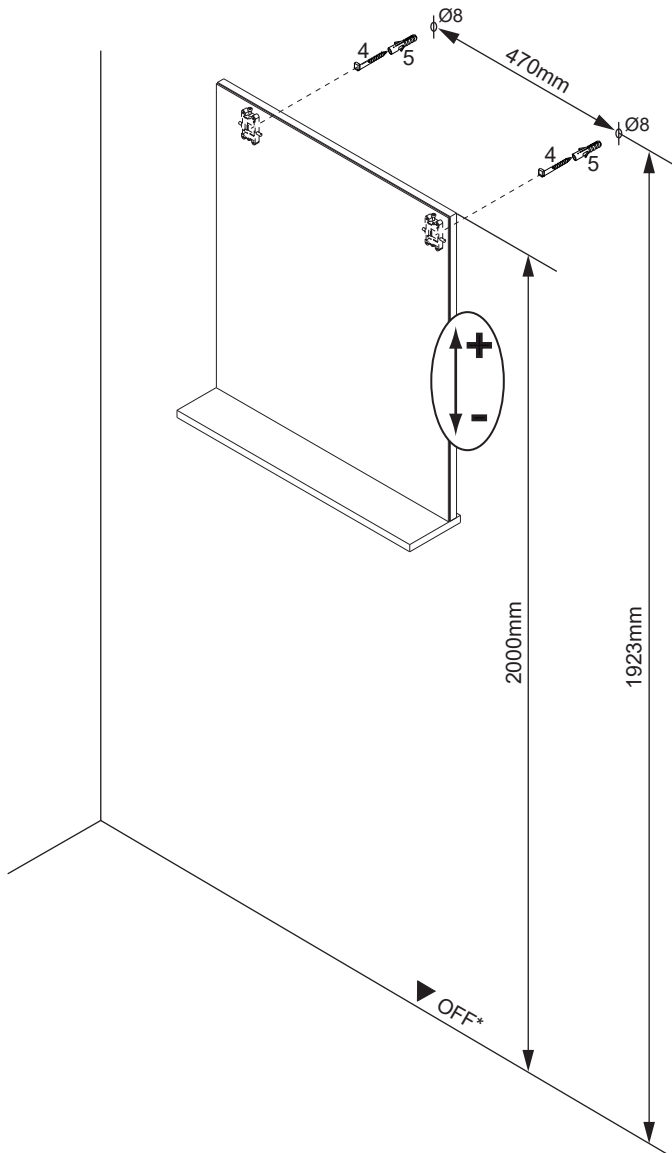
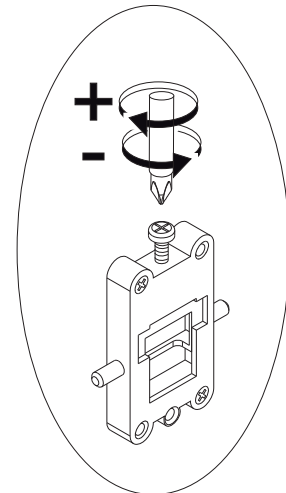
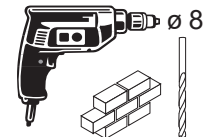
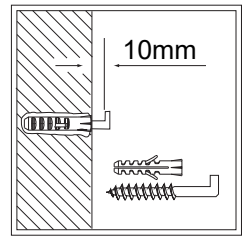
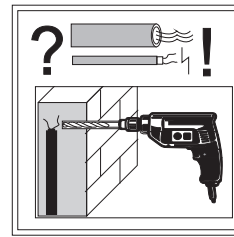


1.2

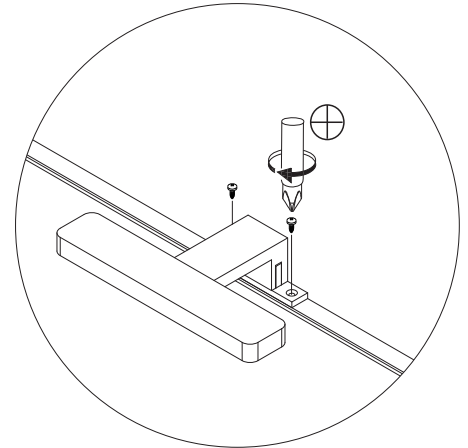
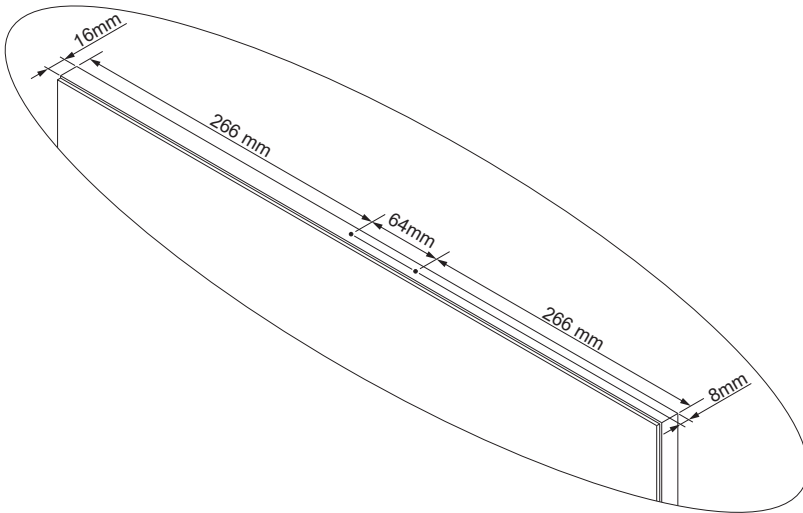
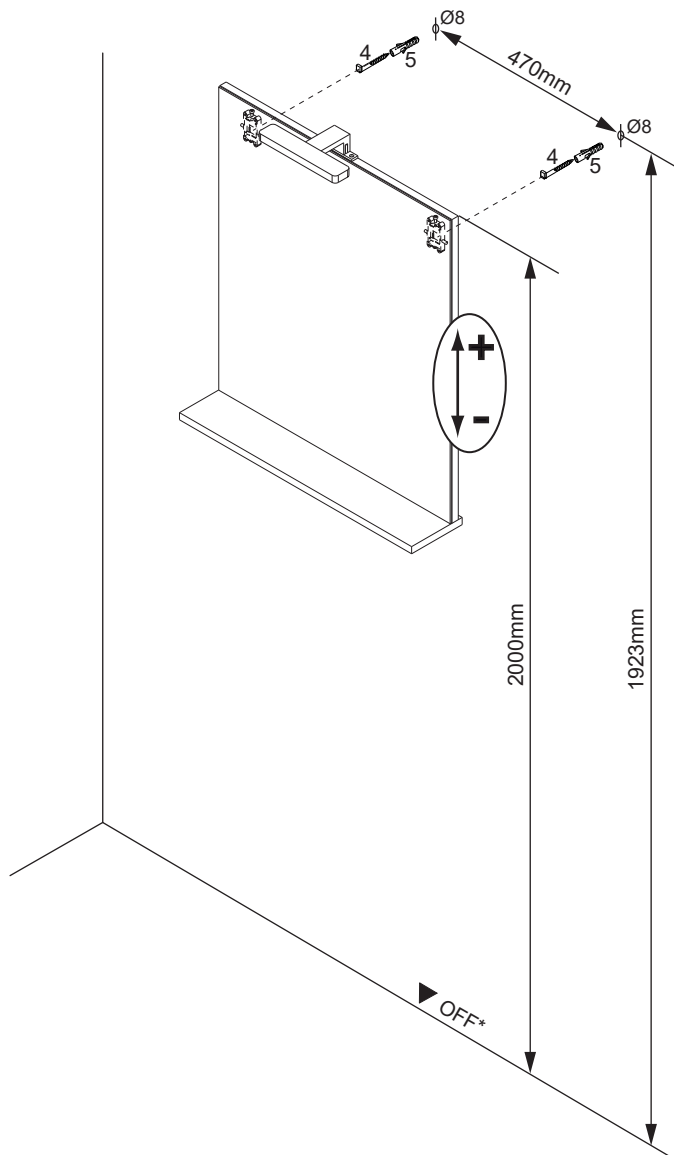
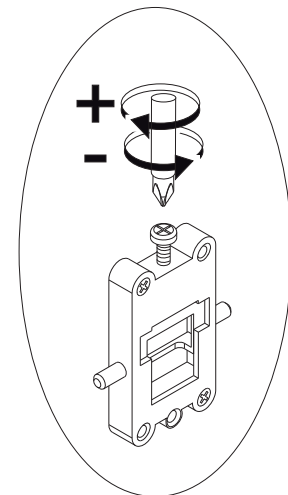
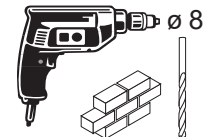
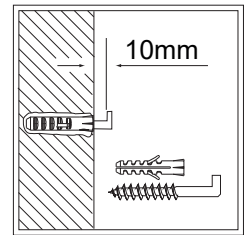
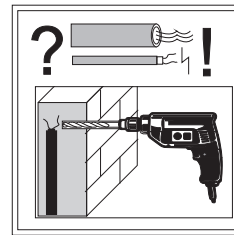


2



Aohne Leuchte/
without lamp**B**mit Leuchte 84372*/
with lamp 84372**nicht inklusive/
*not included**A**ohne Leuchte/
without lamp**3**Abstandsmaß vor Ort prüfen!
Check the distance on site!*OFF = Oberkante fertiger Fußboden
*OFF = Top edge of finished floor**FAKELMANN®**

5BB0846390 S4/5 49/21

Bmit Leuchte 84372/
with lamp 84372Bitte Anleitung 5BB0843720 beachten/
please note instruction sheet 5BB0843720**3**Abstandsmaß vor Ort prüfen!
Check the distance on site!*OFF = Oberkante fertiger Fußboden
*OFF = Top edge of finished floor**FAKELMANN®**

5BB0846390 S5/5 49/21

